

Transboundary Venta RBD management plan – basis for further Latvian – Lithuanian cooperation

Sigita Šulca

M. Sc. environmental sciences

Environmental Consultations Center

NORLINDA

Latvian – Lithuanian transboundary cooperation program for 2007–2013,
project LLIII-164 „ **Cross border cooperation in management of Venta
river basin area nature values**” (Live Venta)

Subproject:

Elaboration of cross border Venta River Basin Management Plan

Contracting authority :

Kurzeme Planning Region

(contact person: Ligita Laipeniece)

Executor:

Environmental Consultations Center NORLINDA

(project leader: Normunds Kadiķis)

Time:

till **30 April 2012**

Elaboration of cross border Venta River Basin Management Plan

Overall goal:

Sustainable management of natural resources in the transboundary territory of Venta river basin

Main tasks:

- situation identification in the common Venta river basin district (state of environment, implementation of WFD, etc.)
- provision of recommendations on harmonization of common ecological typology and assessment methods
- identification of transboundary cooperative actions taking into account management plans for Venta river basin district in Latvia and Lithuania, to elaborate transboundary action program and its implementation`s mechanisms
- to propose mechanisms for public involvement

Structure of Venta RBD cross border management plan:

- **ANALYSIS OF THE SITUATION**
- **PUBLIC PARTICIPATION**
- **RECOMMENDATIONS** (with proposals for concrete cooperative priority projects)

Code of water body	Name of water body
LT70010810 2	Šventoj
LT80012010 3	Bartuva
LT80012170 2	Apšē
LT30011430 1	Lūšis
LT30011430 2	Lūšis
LT30011310 4	Varduv
LT30010001 8	Venta
LT30011170 2	Vadakst
LT30011170 1	Vadakst
LT30010610 1	Dabikin

Symbols

Lake ecological quality

- High
- Moderate
- Poor
- Bad

Lake ecological potential, LT

- High
- Good
- Moderate
- Poor

River ecological quality

- High
- Good
- Moderate
- Poor
- Bad

River ecological potential, LT

- High
- Good
- Moderate
- Bad

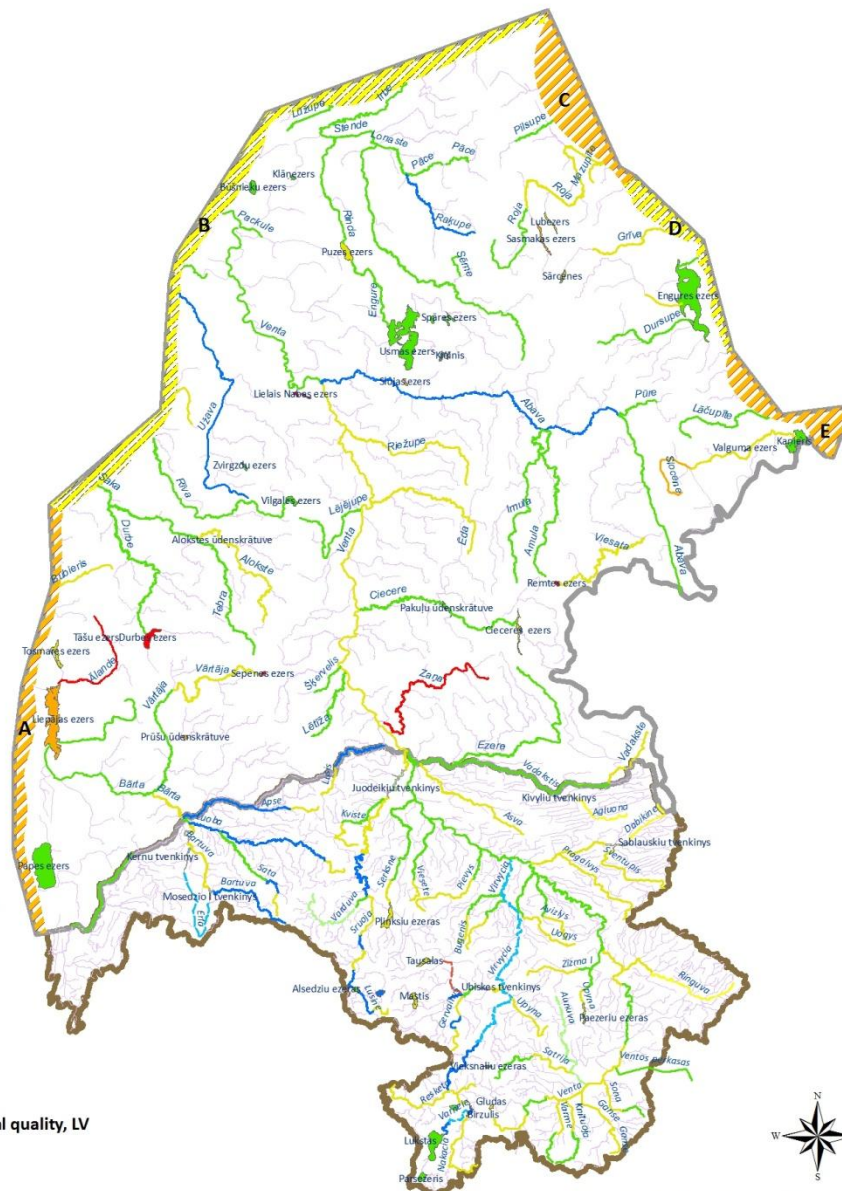
Coastal water body ecological quality, LV

- Moderate
- Poor

Rivers

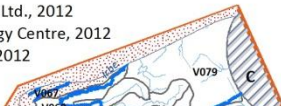
Venta river basin district LV

Venta river basin district LT

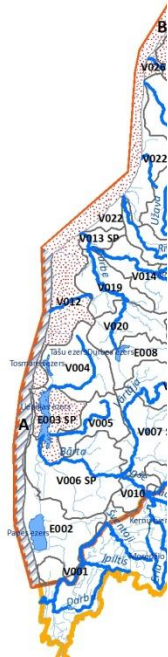


Environmental Consultations Centre NORLINDA Ltd., 2012
 Latvian Environmental, Geology and Meteorology Centre, 2012
 Environmental Protection Agency of Lithuania, 2012
 National Land Service under MoA of Lithuania, SŽNS_GDB10LT, 2012

Ecological quality/potential	Type of monit. *
2	S
3	S/O
2	O
3	Stat.1-S Stat.2-O
2	O
2	O
3	O



DESCRIPTION



Symbols

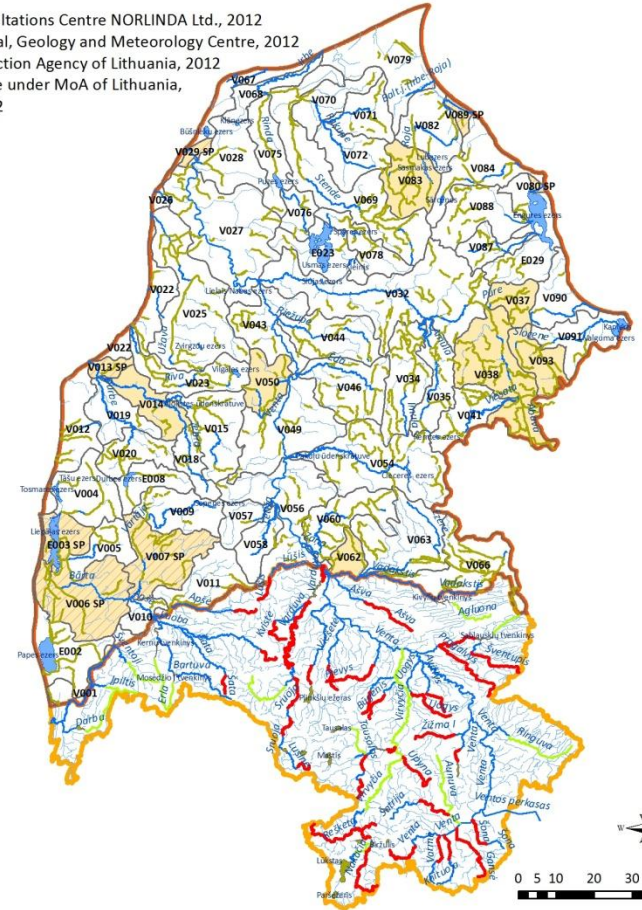
- Significant point source pollutant
- Coastal water bodies LV
- Lake water bodies
- River water bodies
- Water bodies LV
- Significant point source pollutant
- Rivers
- Venta river basin district LV
- Venta river basin district LT



Symbols

- Water bodies LV
- River water bodies
- Lake water bodies
- Land use**
- Land use classes**
- Artificial zones
- Agricultural land
- Forests and semi-natural areas
- Wetlands areas
- Water
- Venta river basin district LV
- Venta river basin district LT

Environmental Consultations Centre NORLINDA Ltd., 2012
 Latvian Environmental, Geology and Meteorology Centre, 2012
 Environmental Protection Agency of Lithuania, 2012
 National Land Service under MoA of Lithuania,
 SŽNS_GDB 10LT, 2012



Symbols

- Significant morphological impact
- Significant watercourses regulations LV
- Heavily modified river water bodies LT
- Heavily modified lake water bodies LT
- Venta river basin district LV
- Venta river basin district LT
- Heavily modified water bodies LV
- Lakes
- Rivers
- River water bodies
- Water bodies LV
- Significant morphological impact



ANALYSIS OF MEASURES

- planned and implemented, or measures to be implemented within the RBD;

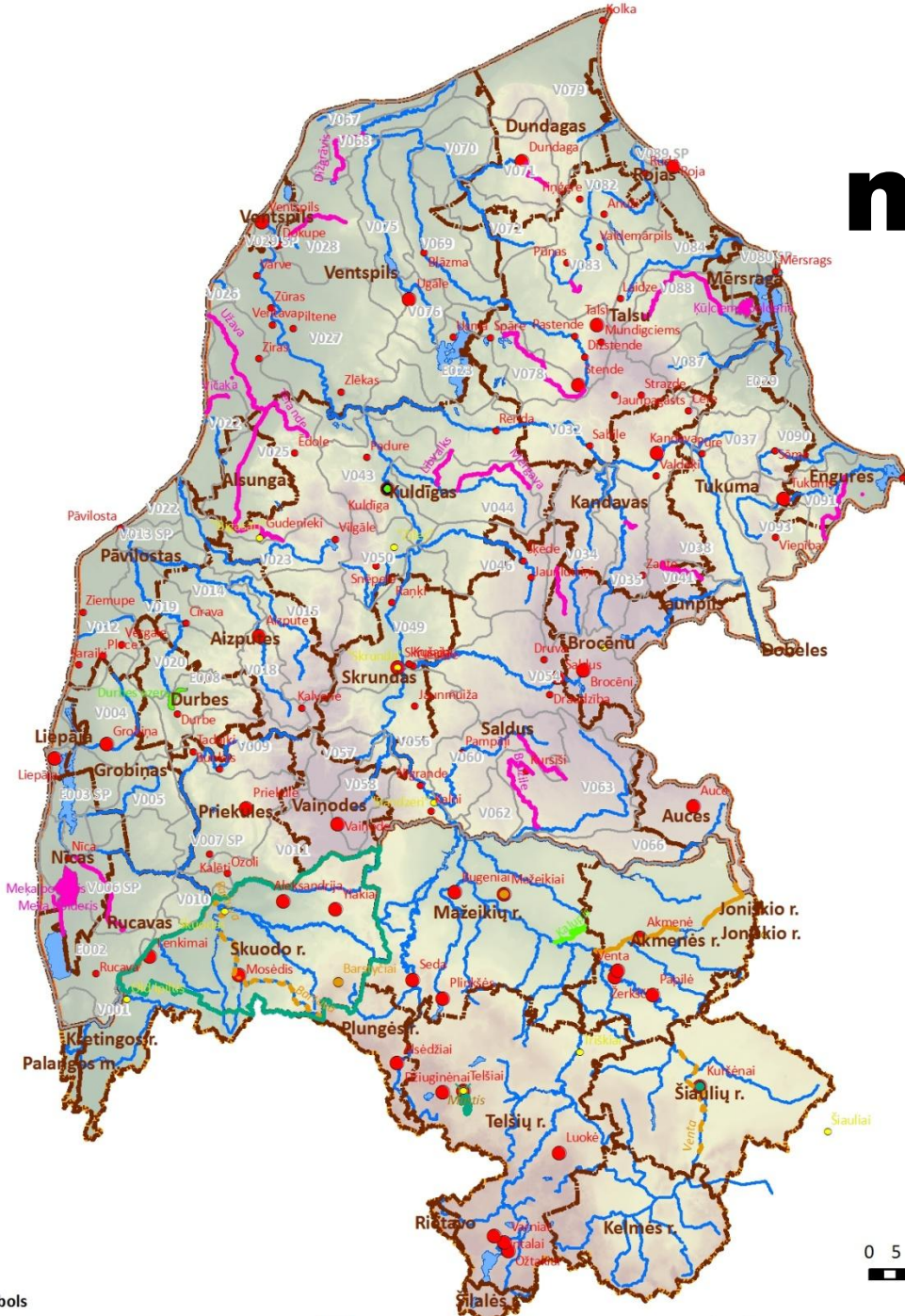
Supplementary measures - to construct or reconstruct wastewater treatment plants in smaller settlements with amount of inhabitants less than 2000.

Remediation of contaminated places is implemented, started or planned.

For reduction of diffuse pollution - in Lithuanian part of the RBD introduced special measures anticipated for nitrate vulnerable zones.

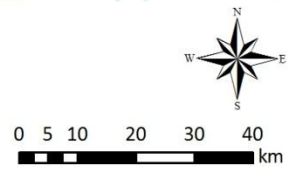
For improvement of hydromorphological conditions measures implemented or started to a very limited extent .

Map of measures



Water management infrastructure development projects, LV

- <2000
- >2000
- Water management infrastructure development projects, LT
- Measures related to water quantity and quality issues
- Measures related to water quantity and quality issues
- Measures related to water quantity and quality issues
- Implemented melioration projects
- Implemented melioration projects
- Projects for remediation of contaminated sites
- Measure for improvement of hydromorphological conditions
- Measures for improvement of hydromorphological conditions
- Measures for improvement of hydromorphological conditions
- Research and attractiveness projects
- Research and attractiveness projects
- X Planned projects for groundwater protection



Public information and involvement

A special working group of the project was established consisting of participants from the Ministries of Environment in both countries, Lithuanian Environmental Protection Agency and Latvian Environmental, Geology and Meteorology Centre, Kurzeme Planning Region, Venta Regional Park, Liepāja Regional Environmental Board, Siauliai Regional Environmental Protection Department, Kuldīga and Saldus municipalities and Skuodo County municipality.

Four meetings of the working group were organized.

Recommendations

- Formal arrangement of cooperation at the level of Ministries of Environment, information exchange at regular basis and public involvement;
- Initiative in relation to driving of the general cooperation within the Venta RBD should be taken by regional institutions but it can be delegated to third parties, as well;
- Municipalities along the border shall cooperate on local issues;
- Special suggestions are provided with respect to harmonization of water ecological typology and quality classification system in the common water bodies of Venta RBD. It could be done by some simplification of existing ecological typologies;
- Cross border action program for water bodies in the Venta basin, analysis of implementation costs and priorities.

Priority actions for reduction of cross border pressures and impacts in the Venta RBD

1. Harmonization of essential prerequisites for adequate assessment of ecological quality of transboundary surface water bodies, introduction of missing biological quality elements and bilateral intercalibration of biological assessment methods [75 000 EUR]
2. Elaboration and implementation of information campaign and education program for two main stakeholders (farmers and forest managers) in order to reduce diffuse pollution and improve hidromorphological conditions of surface water in the Venta RBD [100 000 EUR]
3. Elaboration and implementation of education program for spatial planners in municipalities with respect to water management and issues related to implementation of WFD and river basin management plans, study visits to other countries [100 000 EUR]

4. Development of common methodologies for assessment of diffuse pollution within the river basin [15 000 EUR]
5. Inventory of cross border rivers, lakes and ponds in which improvement of hydromorphological conditions by easy to be realized measures as well as establishment of facilitated recreational areas is necessary [20 000 EUR]
6. Elaboration of concept on gathering of necessary data for water quality modelling [10 000 EUR]
7. Analysis of existing offer of water tourism routes in Latvia and Lithuania and elaboration of integrated new ones covering both countries [30 000 EUR]
8. Elaboration of public (voluntary) water monitoring program dedicated to school pupils and other interested people, launching of the process [50 000 EUR for five years]
9. Elaboration of guidelines for hydromorphologically altered rivers` and lakes` renaturalization, implementation in a few pilot parts of water bodies [100 000 EUR]



For preparation of common international Venta river basin management plan there are a few working fields remaining in spite of the fact that first river basin management plans in Latvia and Lithuania have been prepared and reported to European Commission (EC) in 2009/2010.

More detailed plan for further common activities could be highlighted **after receiving resolution from EC experts.**

Thank you!

Information on the project:

www.kurzemesregions.lv

Questions, comments, etc.:

norlinda@inbox.lv